



# GRAND CANYON

## *Railway & Hotel*

EST. 1901



THE  
**GRANDEST ENTRANCE**  
TO THE  
— GRAND CANYON —

DEPARTING DAILY FROM WILLIAMS, ARIZONA  
FOR GRAND CANYON NATIONAL PARK



# MAKE A GRAND TRIP

## THE GRANDEST

Since 1901, Grand Canyon Railway has enchanted millions of people from all over the world, taking them on a journey into the heart of one of the Seven Natural Wonders of the World · Grand Canyon National Park.

Make your trip to Grand Canyon even more memorable by traveling aboard a vintage train along a century-old rail line. With six classes of restored passenger service, Grand Canyon Railway is more than a mode of transportation; it's a trip back in time!



Williams, AZ, is easily accessible from interstate highways. Take I-40 to Exit 163. Follow Grand Canyon Boulevard one-half mile south to Grand Canyon Railway.

CLICK BUTTON FOR VIDEO:





## TRAIN CLASSES

### CHOOSE FROM SIX DISTINCT CLASSES OF SERVICE

Journey from Williams to the South Rim along a rail line that dates back to 1901. From high desert to prairie, from prairie to pine, enjoy an ever-changing landscape until you come across a view that could very well change you forever.

#### PULLMAN CLASS

Ride in an original 1923 Harriman-style coach car perfect for families. A service attendant shares the train's history and helps passengers plan a fantastic Grand Canyon stay. Western entertainers are also on board to and from the canyon.

**ADULTS: \$67**  
**CHILDREN: \$32**



#### COACH CLASS

Streamliner-era coaches will get you to the canyon and back in style. Enjoy comfortable bench-style seating in classic air-conditioned cars from the 1950s. Plus, you have access to our classic Café Car, which has snacks and drinks for purchase.

**ADULTS: \$82**  
**CHILDREN: \$51**



#### FIRST CLASS

Enjoy reclining seats with plenty of legroom and grand windows that enhance the journey. Fresh food and beverages are provided during the morning, while snacks are complimentary on the return trip, with bar service available.

**ADULTS: \$159**  
**CHILDREN: \$121**



#### OBSERVATION DOME

Experience panoramic views thanks to a vintage glass-enclosed streamliner car. Bar service is available, with complimentary snacks provided in the morning and afternoon.

**ADULTS: \$189**  
**CHILDREN: \$153**



#### LUXURY PARLOR

Lounge-style comforts include a private bar and access to the rear platform. Plush seating and large picture windows amplify the journey. Fresh fruit, pastries, coffee, and juice are provided during the morning, with complimentary snacks on the return trip, along with sparkling wine.

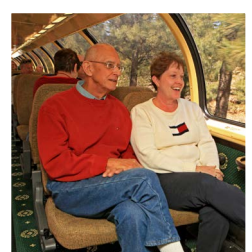
**ADULTS: \$226**  
**CHILDREN: N/A**



#### LUXURY DOME

Take in the scenery from the extra-large windows of our upper-level Observation Dome or enjoy refreshments in the lower level lounge, featuring a bar, entertainment center and plush furniture. Access to the rear Luxury Parlor Observation Platform is included.

**ADULTS: \$226**  
**CHILDREN: N/A**



CLICK BUTTON FOR VIDEO:





# ALL ABOARD TO THE GRAND CANYON

## TRAIN SCHEDULE

9:00 a.m.	Wild West Show
9:15 a.m.	Boarding begins
9:30 a.m.*	Depart Williams
11:45 a.m.	Arrive Grand Canyon
11:45 a.m. – 3:15 p.m.	Option to add a rim tour
3:15 p.m.	Boarding begins
3:30 p.m.	Depart Grand Canyon
5:45 p.m.	Arrive Williams

Times are Mountain Standard Time. Please note that Arizona does not observe daylight saving time.

Train boards 15 minutes before departure. During peak periods, a second departure may be scheduled.

\*Departure time is 8:30 a.m. MST during the months of November and December.



CLICK BUTTON FOR VIDEO:





## GRAND CANYON RAILWAY HOTEL

Designed to resemble the century-old train depot that housed the original Fray Marcos Hotel, The Grand Canyon Railway Hotel offers comfortable lodging in a picturesque western setting. Nestled within the Ponderosa pine forest of Williams, Arizona, our family-friendly hotel is one of the finest in the region. With its inviting flagstone fireplace, business center, indoor swimming pool and spa, complimentary internet access, four different types of guest rooms, and historic Spenser's Pub, you'll find comfort in this Western retreat.



### STANDARD/DELUXE ROOM

Two triple-sheeted queen beds, full bath with granite countertops, satellite TV, mini-fridge, air conditioning, and Keurig coffee maker.



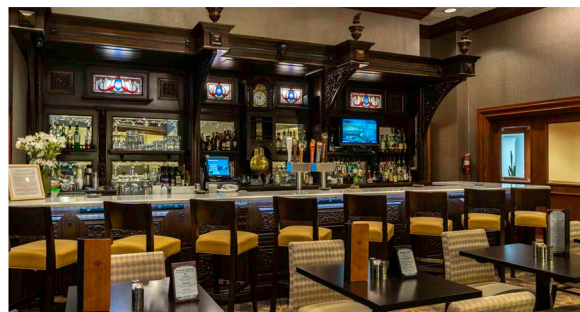
### SUITE

Two triple-sheeted queen beds, full bath, spacious separate living room with sofa bed, microwave oven, mini-fridge, Keurig coffee maker, satellite TVs, and kitchenette.



### HEATED INDOOR POOL AND HOT TUB

Unwind after a long day exploring one of the seven natural wonders of the world in our heated indoor pool and hot tub.



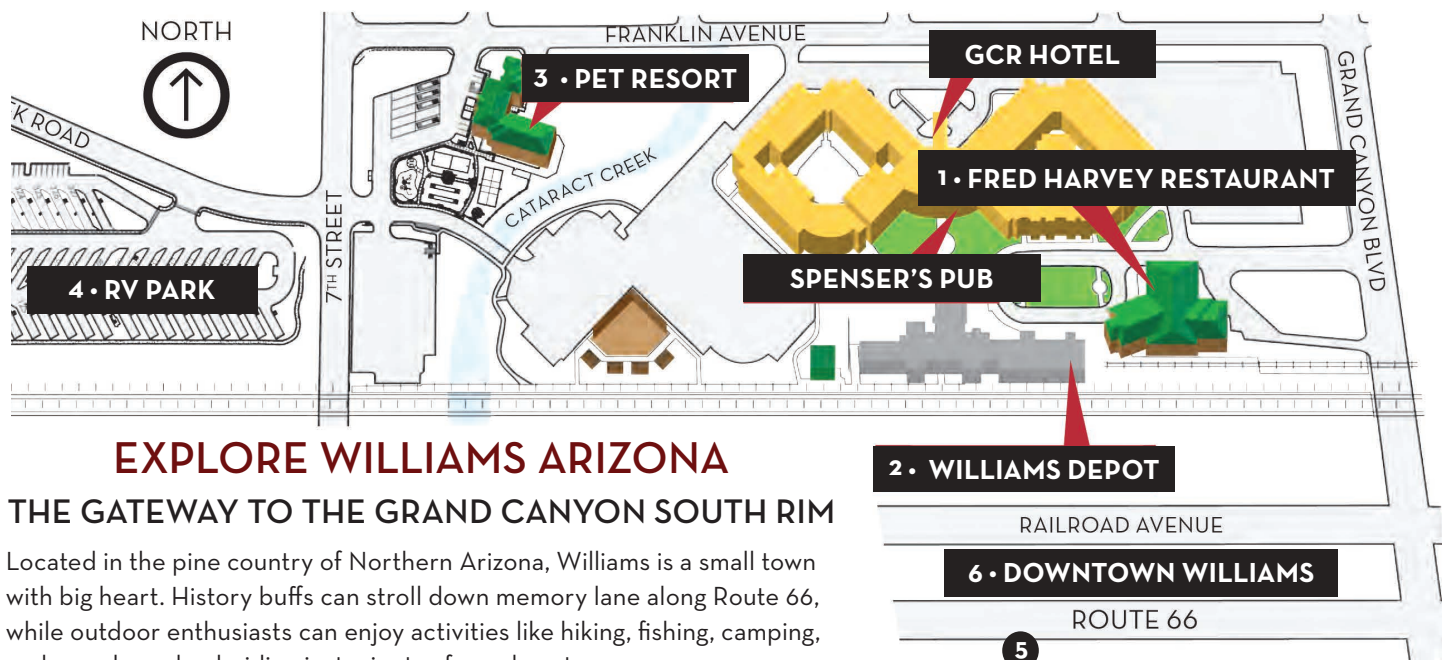
### SPENSER'S PUB

The handcrafted bar in Spenser's Pub dates back to 1887. Located in the Grand Canyon Railway Hotel, Spenser's is the perfect place to relax and enjoy a wide selection of pub-style food and handcrafted cocktails.

CLICK BUTTON FOR VIDEO:







## EXPLORE WILLIAMS ARIZONA

### THE GATEWAY TO THE GRAND CANYON SOUTH RIM

Located in the pine country of Northern Arizona, Williams is a small town with big heart. History buffs can stroll down memory lane along Route 66, while outdoor enthusiasts can enjoy activities like hiking, fishing, camping, and even horseback riding just minutes from downtown.

1



#### FRED HARVEY RESTAURANT

The Fred Harvey Restaurant is located across from the hotel and serves breakfast and dinner.

2



#### WILLIAMS DEPOT

Williams Depot is the southern terminus for the Grand Canyon Railway, located in the original Fray Marcos Hotel. The original building remains and is listed on the register of Arizona State Historic Properties.

3



#### PET RESORT

Our pet resort offers spacious pet suites, an outdoor play yard, and a caring staff. Contact us for more information. For pet safety, current vaccination records are required.

4



#### RV PARK

Our RV Park includes full hook-ups, showers and laundry facilities, and is located adjacent to the historic train depot.

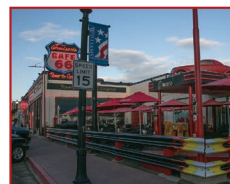
5



#### ROUTE 66

Although much of the original "Mother Road" was replaced by I-40, Williams, Arizona, is home to one of the last remaining preserved stretches of the iconic Route 66.

6



#### DOWNTOWN WILLIAMS

Nostalgia abounds in charming downtown Williams. Here, you'll find old-fashioned soda fountains, classic cars, wholesome cafes, and buildings dating back to the 1920s, all lining historic Route 66.

## MORE TO EXPLORE NEARBY

Bearizona Drive Through Wildlife Park | Historic Route 66 | Grand Canyon Deer Farm  
Planes Of Fame Air Museum | Sycamore Canyon | Route 66 Zipline | Kaibab Petroglyphs

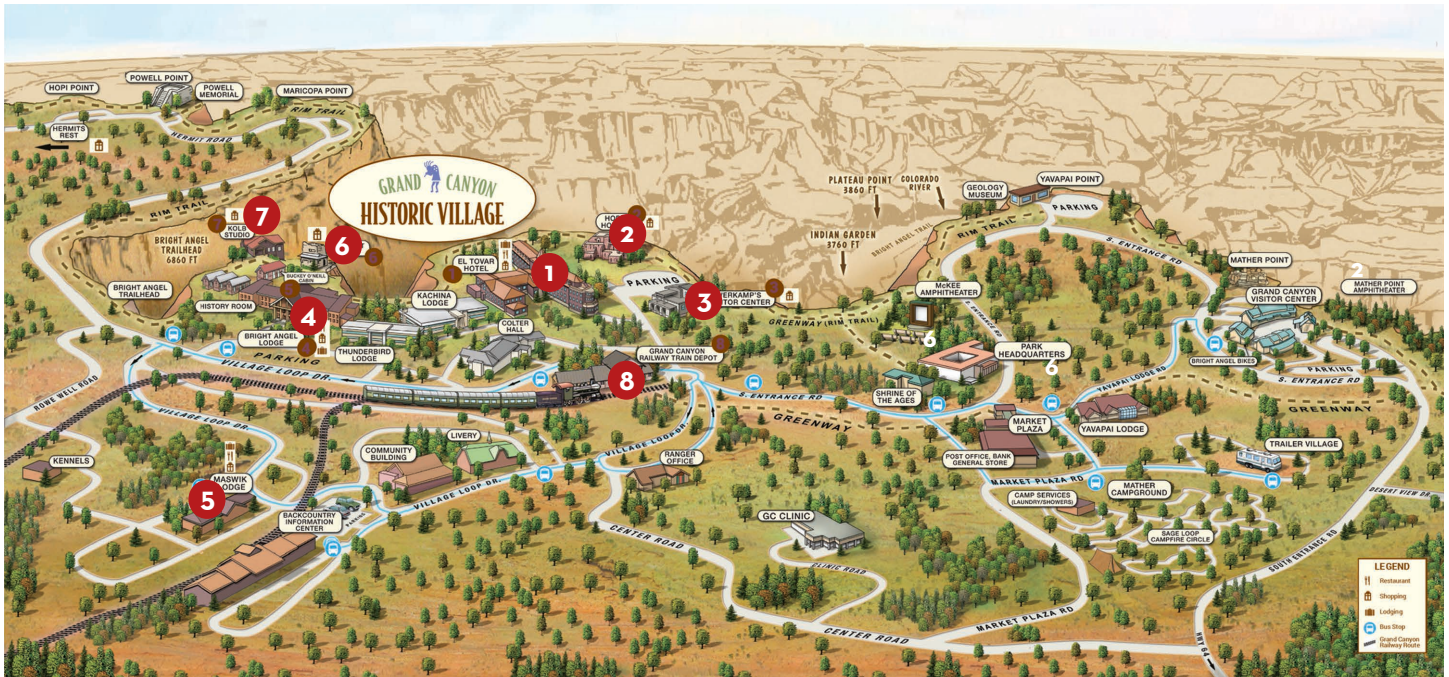
For More Information Contact Your Local Travel Agent





## MUST-SEE SIGHTS AT THE RIM

If you haven't explored this historic village, you haven't experienced the Grand Canyon.



### EL TOVAR

The 1905 El Tovar is one of America's great historic hotels and is famous for luxury accommodations, fine dining, shopping and spectacular views from nearly every window.



### HOP HOUSE

The Hopi House, a 1905 National Historic Landmark on the canyon rim serves today as a unique gift shop offering authentic Native American art and jewelry.



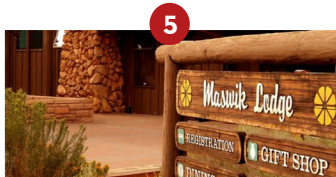
### VERKAMP'S VISITOR CENTER

Verkamp's opened in 1906 as a curio and souvenir shop currently serves as a pioneer history museum and Grand Canyon Conservancy store.



### BRIGHT ANGEL LODGE

Opened in 1935, the Bright Angel Lodge offers rustic charm on the canyon rim where visitors find both comfort and convenience. Visit the Fred Harvey History Room to see exhibits of the early days of the company.



### MASWIK LODGE

Maswik Lodge is a 280-room lodging complex nestled within several acres of Ponderosa pine forest. The complex consists of the main lodge building that houses the Registration Desk, Gift Shop, Maswik Food Court, and Pizza Pub.



### LOOKOUT STUDIO

Blending in with its environment, Lookout Studio's multi-level porches give visitors breathtaking views right on the canyon's edge. The Lookout Studio was designed by Mary Colter and opened in 1914.



### KOLB STUDIO

Brothers Kolb's 1904 home and studio teetering on the rim now offers art exhibits, a bookstore, Native American artifacts and an auditorium.



### GRAND CANYON RAILWAY

Built in 1910, The Train Depot is now a showplace of early tourism with historic photographs of the South Rim displayed all around its timber walls.



# MAKE A GRAND TRIP — THE GRANDEST —

## SAVE WITH EXCLUSIVE PACKAGES

Grand Canyon Railway and Hotel makes it easy and convenient to plan an itinerary that includes roundtrip train travel, accommodations, and more, including overnight stays inside Grand Canyon National Park. Let us take care of the details, while you sit back and are spellbound by some of the most stunning scenery on Earth.



### FEATURED OFFER- CANYON WONDER PACKAGE

Bundle and save up to 15% off train tickets and overnight accommodations. Available for 2- to 5-day getaways:

**2 Days & 1 Night:** (Day 1) Arrive in Williams, overnight stay at Grand Canyon Railway Hotel in Williams (Day 2) Wild West Show, Roundtrip train travel from Williams to Grand Canyon National Park, explore Williams and safe travels home. **From \$215-\$352\*.**

**4 Days & 3 Nights:** (Day 1) Arrive in Williams, overnight at Grand Canyon Railway Hotel in Williams (Day 2) Wild West Show, Northbound train travel from Williams to Grand Canyon National Park, overnight stay at Maswik Lodge inside the park (Day 3) Additional time inside the park, southbound train travel from Grand Canyon South Rim to Williams, overnight stay at Grand Canyon Railway Hotel (Day 4) Explore Williams and safe travels home. **From \$467-\$835\*.**

**3 Days & 2 Nights:** (Day 1) Arrive in Williams, overnight stay at Grand Canyon Railway Hotel in Williams (Day 2) Wild West Show, Roundtrip train travel from Williams to Grand Canyon National Park, overnight stay at Grand Canyon Railway Hotel (Day 3) Explore Williams and safe travels home. **From \$292-\$522\*.**

**5 Days & 4 Nights:** (Day 1) Arrive in Williams, overnight at Grand Canyon Railway Hotel in Williams (Day 2) Wild West Show, Northbound train travel from Williams to Grand Canyon National Park, overnight stay at Maswik Lodge inside the park (Day 3) Full day inside the park, overnight stay at Maswik Lodge (Day 4) Additional time inside the park, southbound train travel from Grand Canyon South Rim to Williams, overnight stay at Grand Canyon Railway Hotel (Day 5) Explore Williams and safe travels home. **From \$623-\$1,109\*.**

**For More Details and to Make Reservations  
CONTACT YOUR LOCAL TRAVEL AGENT**

\* Package rates are illustrative and are based upon adult double occupancy in Standard Room(s) and Coach Class train travel, do not include taxes, meals, or National Park entry fee, and are subject to change. National Park entry fee is not discountable. Offer may not be combined with other discounts or promotional offers. Other restrictions, including blackout dates, may apply. New bookings only. Call or visit website (thetrain.com) for important details.



## FEATURED OFFER 1- CANYON DISCOVERY PACKAGE

Discover the Grand Canyon and save 10% with this package. Looking for a long getaway? Stay more than three nights and get a room in the park!

### **3 Days & 2 Nights:**

(Day 1) Arrive in Williams, Arizona. Dinner at Fred Harvey Restaurant (FHR) and overnight stay at Grand Canyon Railway Hotel. (Day 2) Breakfast at FHR, Wild West Show, roundtrip train travel from Williams to Grand Canyon National Park, Freedom Tour at Grand Canyon, Dinner at FHR (Day 3) Breakfast at FHR

### **4 Days & 3 Nights:**

(Day 1) Arrive in Williams, Arizona. Dinner at FHR and overnight stay at Grand Canyon Railway Hotel. (Day 2) Breakfast at FHR, Wild West Show, train travel from Williams to Grand Canyon National Park, Freedom Tour, overnight stay at Maswik lodge (Day 3) Return to Williams, Dinner at FHR and hotel stay (Day 4) Breakfast at FHR

### **5 Days & 4 Nights:**

(Day 1) Arrive in Williams, Arizona. Dinner at FHR and overnight stay at Grand Canyon Railway Hotel. (Day 2) Breakfast, Wild West Show, train travel from Williams to Grand Canyon National Park, Freedom Tour, overnight stay at Maswik lodge (Day 3) Overnight stay at Maswik Lodge at Grand Canyon National Park (Day 4) Return travel to Williams, Dinner at FHR, Overnight stay in Williams (Day 5) Breakfast at FHR

## FEATURED OFFER 2- RAILWAY GETAWAY PACKAGE

Train, lodging and meals - one easy way to book a vacation to the Canyon.

### **2 Days & 1 Night:**

(Day 1) Arrive in Williams, Arizona. Dinner at Fred Harvey Restaurant (FHR) and overnight stay at Grand Canyon Railway Hotel. (Day 2) Breakfast at FHR, Wild West Show, roundtrip train travel from Williams to Grand Canyon National Park

### **3 Days & 2 Nights:**

(Day 1) Arrive in Williams, Arizona. Dinner at FHR and overnight stay at Grand Canyon Railway Hotel. (Day 2) Breakfast at FHR, Wild West Show, train travel from Williams to Grand Canyon National Park, Dinner at FHR, Overnight stay in Williams (Day 3) Breakfast at FHR

## FEATURED OFFER 3- CANYON LIMITED PACKAGE

A guided tour, then spend a night at one of the most spectacular sites in nature.

### **3 Days & 2 Nights:**

(Day 1) Arrive in Williams, Arizona. Dinner at Fred Harvey Restaurant (FHR) and overnight stay at Grand Canyon Railway Hotel. (Day 2) Breakfast at FHR, Wild West Show, roundtrip train travel from Williams to Grand Canyon National Park, Freedom Tour at Grand Canyon, overnight stay at Maswik lodge (Day 3) Return travel to Williams

### **4 Days & 3 Nights:**

(Day 1) Arrive in Williams, Arizona. Dinner at FHR and overnight stay at Grand Canyon Railway Hotel. (Day 2) Breakfast at FHR, Wild West Show, train travel from Williams to Grand Canyon National Park, Freedom Tour, overnight stay at Maswik lodge (Day 3) Overnight stay at Maswik Lodge at Grand Canyon National Park (Day 4) Return travel to Williams



## ENHANCE YOUR ADVENTURE



### SPEND THE NIGHT AT THE CANYON MASWIK LODGE NORTH STANDARD ROOM

Stay a night at Maswik Lodge, just a short stroll from the rim and the historic district. Rooms include two queen beds, air conditioning, cable TV, and Keurig coffee maker.



### FREEDOM BUS TOUR

See the canyon from different perspectives. Take a 1.5 hour guided motor coach tour that works in conjunction with the train's schedule during the layover while at the canyon, allowing you to get to some of the most recognizable view points along the South Rim that you wouldn't have time to walk to. Plus, you'll still have time to walk the historic Grand Canyon Village where you can eat lunch and visit historic hotels and shops.

**ADULT: \$43.00 CHILD: \$30.00**



### GRAND BUS TOUR

Enjoy the same great experience as the Freedom Tour, plus enjoy a hot lunch at Maswik Lodge featuring an all you-can-eat taco bar. The 2.5 hour tour works seamlessly with the train's schedule, allowing you to get to some of the most recognizable view points along the South Rim. The tour bus will deliver you right to your lunch so all the planning is taken care of. Plus, you'll have about an hour on your own to explore the historic Grand Canyon Village where you can visit the historic hotels and shops.

**ADULT: \$59.00 CHILD: \$45.00**



### SUNSET BUS TOUR

The "Arizona Sunset Tour" is an exclusive tour for train passengers staying overnight in the park, and features a guided, round-trip motorcoach ride. The narrated 2-hour tour will include four stops at the best places along the rim for viewing and that special sunset photograph. Also included with the purchase of this tour is lunch at the Arizona Steakhouse.

**ADULT: \$94.00 CHILD: \$78.00**

**For More Details and to Make Reservations  
CONTACT YOUR LOCAL TRAVEL AGENT**



# RAIL BARON CHARTERS

Make the most out of your Grand Canyon adventure with your own private train. Designed for those with vacation dreams as big as the canyon, Rail Baron Charters combine the luxury of private train cars with the experience of the Old West to provide the perfect platform for celebrating a wedding, birthday, anniversary, retirement, class reunion, or other milestone moments.

**CONTACT YOUR LOCAL TRAVEL AGENT TO  
PLAN YOUR JOURNEY.**

[charters@thetrain.com](mailto:charters@thetrain.com) | 928-635-5700





## INTRODUCING RAIL BARON CHARTERS, YOUR OWN PRIVATE TRAIN

The grandest way to make a Grand Trip Grander, Rail Baron Charters are for those who wish to make the ultimate Grand Canyon memories. Charter your own private car, set of cars, or even a private train from Williams, AZ to Grand Canyon National Park and back while our helpful and entertaining staff make the journey one you will reflect on with joy for years to come. Designed for those with vacation dreams as big as the canyon, Rail Baron Charters combine the luxury of private train cars with the views of the old West and provide the perfect platform for celebrating a wedding, birthday, anniversary, retirement, class reunion, or other milestone moments.

### YOUR PRIVATE CAR OR YOUR PRIVATE TRAIN



#### CHARTER A CAR ON THE DAILY TRAIN TO THE GRAND CANYON

Choose one of our classic passenger cars and make it a private experience for your friends and family on the daily scheduled departure from Williams to the Grand Canyon. Ride in style in your choice of rail car, or even charter multiple cars. It's a great option for any size group that wants to have privacy in a vintage environment.



#### BE THE TRAIN MASTER - CONTROL THE SCHEDULE & CHARTER A PRIVATE TRAIN

Want to control the entire experience? Select your steam or diesel locomotive, choose your passenger cars, and customize your experience with a wide variety of add-ons. You can choose how long you stay at the Grand Canyon and when you want to head back. No need to stick to anyone's schedule but your own.

### ENHANCE YOUR JOURNEY WITH ADD-ONS



HIRE A PHOTOGRAPHER



ADD STEAM LOCOMOTIVE



LIVE ENTERTAINMENT

**For More Information and Pricing  
CONTACT YOUR LOCAL TRAVEL AGENT**



# THE POLAR EXPRESS

## *Train Ride*

Each November and December, Grand Canyon Railway's Polar Express comes to life on a journey from the nighttime wilderness of Williams, Arizona, to the enchanted beauty of "the North Pole" where Santa Claus and his reindeer are waiting with a keepsake present for every good boy and girl. Enjoy hot chocolate and chocolate chip cookies while listening to this timeless story. The ride is just over an hour, departing at 5:30 p.m. and 7:30 p.m.

CONTACT YOUR LOCAL TRAVEL AGENT TO  
BOOK YOUR JOURNEY.





# ALL ABOARD THE ULTIMATE POLAR EXPRESS

Discover The Ultimate Polar Express Experience aboard your own private train car to the North Pole! Travel with your family and friends to the North Pole and we'll bring the classic book and movie to life. Your private chef will lead Christmas carols and share treats like cookies and hot chocolate. Santa Claus will board the train, present each child the signature Polar Express bell, and spend the whole journey back from the North Pole.

CONTACT YOUR LOCAL TRAVEL AGENT TO  
PLAN YOUR JOURNEY.



TM & © Warner Bros. Entertainment Inc.  
(s23)



# THE GRANDEST ENTRANCE TO THE — GRAND CANYON —

## TRAVELERS WITH MOBILITY RESTRICTIONS

Due to the age of the equipment, limited services are available and advance notification of mobility restrictions is required. When making reservations, please let your agent know if passengers will be in a wheelchair or mobile scooter.

## CANCELLATION POLICY | TERMS AND CONDITIONS

All reservations for Grand Canyon Railway (GCR) require full payment at the time of booking the reservation. If your plans change, you may modify your reservation up through the day prior of your original date of travel. Changes are subject to availability and subject to the current applicable rates and restrictions for the new dates, classes of service, packages, etc. If you must cancel your reservation, you may receive a full refund of the payment provided you cancel the reservation and obtain a cancellation number at least 72 hours (three days) prior to the date of travel. Cancellations made less than 72 hours prior to the date of travel will be nonrefundable and your payment will be forfeited. Reservations booked within 72 hours are immediately nonrefundable. Tickets must be picked up a minimum of 30 minutes prior to the scheduled train departure from the Grand Canyon Railway Depot in Williams, Ariz. GCR tickets are nontransferable and the person picking up the tickets must match the name on the reservation — photo identification will be required for pickup. Failure to arrive on the scheduled arrival date will result in cancellation of your reservation and forfeiture of your deposit. Arrival times are approximate. Rates and schedules are valid through 12/31/23 and are subject to change without notice. Please limit luggage to one standard bag and one carry-on bag and limit luggage weight to no more than 40 pounds per person. Additional luggage charges may apply. No smoking or pets permitted aboard the train or in the hotel. Authorized concessioner of the National Park Service and U.S. Forest Service. Transportation, taxes, and gratuities are additional unless otherwise specified.



©Grand Canyon Railway, L.L.C.  
233 N. Grand Canyon Blvd., Williams, AZ 86046  
[www.thetrain.com](http://www.thetrain.com)