

HOTEL LODGING

AT BOTH ENDS OF THE LINE

Nestled within the Ponderosa pine forest of Williams, Arizona, just a one minute stroll from Route 66, our family-friendly hotel is one of the finest in the region. With its inviting lobby featuring a flagstone fireplace, business center, indoor swimming pool and spa, satellite TV, complimentary Internet access, four different types of guest rooms, and Spenser's Pub — with a bar from 19th century England — you'll find comfort in this western retreat.



HOTEL LOBBY



HEATED INDOOR POOL AND HOT TUB



SPENSER'S PUB



STANDARD/DELUXE ROOMS Two triple-sheeted queen beds, full bath with granite countertops, satellite TV, mini-fridge, air conditioning, and Keurig coffee maker.



SUITE Two triple-sheeted queen beds, full bath, spacious separate living room with sofa bed, microwave oven, mini-fridge, Keurig coffee maker, satellite TVs, and kitchenette.



RAIL BARON SUITE A one-of-a-kind 1,000 square foot retreat with luxurious bed and bath, separate full living room, and full kitchen.



MASWIK LODGE Rooms at Maswik Lodge, located on the South Rim of the Grand Canyon, feature two queen beds, air conditioning, cable TV, and Keurig coffee makers.

THE POLAR EXPRESS



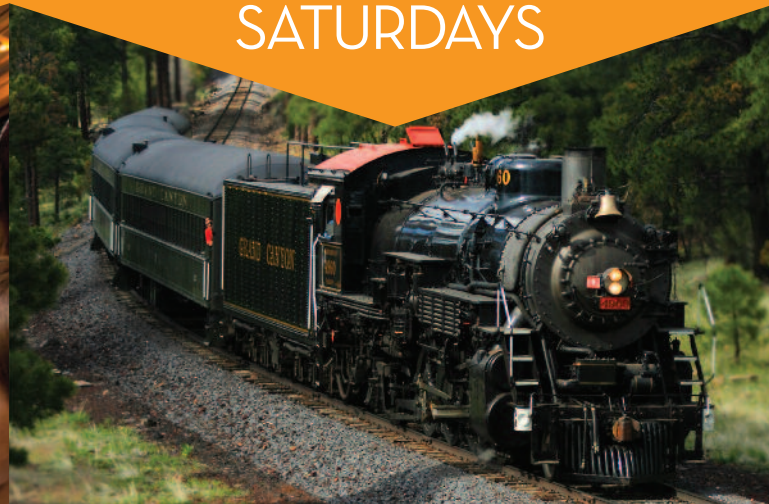
Experience the magic of The Polar Express, the classic children's book by Chris Van Allsburg. The story comes to life when your train departs the Williams Depot for a journey through the starlit wilderness for a special visit to the "North Pole" every November through January. Enjoy hot chocolate and cookies while listening to and reliving this magical story, creating memories your family will cherish forever.

Call or visit our web site to learn more about hotel packages and "The Christmas Eve Limited" - an exclusive December 24th departure just like the story!



THE POLAR EXPRESS and all related characters and elements © & ™ Warner Bros. Entertainment Inc. (s19)

STEAM SATURDAYS



The Grand Canyon Railway celebrates the history of vintage rail travel by operating steam-powered departures to Grand Canyon National Park with either of our two historic steam locomotives on select dates each year.

STEAM SATURDAYS:

The first Saturday of each month - March through October

SPECIAL HOLIDAYS:

Presidents Day, Earth Day and Grand Canyon Railway Anniversary

TRAVELERS WITH MOBILITY RESTRICTIONS

Due to the age of the equipment, limited services are available and advance notification of mobility restrictions is required. When making reservations, please let your agent know if passengers will be in a wheelchair or mobile scooter.

CANCELLATION POLICY | TERMS AND CONDITIONS

POLAR EXPRESS Terms & Conditions are different, please see our website or ask one of our representatives for details. All non-Polar Express reservations for Grand Canyon Railway require full payment at the time of booking the reservation. If your plans change, you may modify your reservation up through the day prior of your original date of travel. Changes are subject to availability and subject to the current applicable rates and restrictions for the new dates, classes of service, packages, etc. If you must cancel your reservation, you may receive a full refund of the payment provided you cancel the reservation and obtain a cancellation number at least 72 hours (3-days) prior to the date of travel. Cancellations made less than 72 hours prior to the date of travel will be non-refundable and your payment will be forfeited. Reservations booked within 72 hours are immediately non-refundable. Tickets must be picked up a minimum of 1 hour prior to the scheduled train departure from the Grand Canyon Railway Depot in Williams, AZ. Grand Canyon Railway tickets are non-transferable and the person picking up the tickets must match the name on the reservation — photo identification will be required for pickup. Failure to arrive on the scheduled arrival date will result in cancellation of your reservation and forfeiture of your deposit. Rates and schedules are subject to change without notice. Please limit luggage to one standard bag and one carry-on bag and limit luggage weight to no more than 40 pounds per person. Additional luggage charges may apply. Arrival times are approximate. No smoking or pets permitted aboard the train or in the GCR Hotel. GCR is an authorized concessioner of the National Park Service and U.S. Forest Service. Transportation, taxes and gratuities are additional unless otherwise specified.



©Grand Canyon Railway, L.L.C.
233 N. Grand Canyon Blvd., Williams, AZ 86046
www.thetrain.com

GRAND CANYON
Railway & Hotel
EST. 1901

MAKE A GRAND TRIP
GRANDER

DEPARTING DAILY FROM WILLIAMS, ARIZONA
FOR GRAND CANYON NATIONAL PARK
SINCE 1901



TRAIN CLASSES

CHOOSE FROM 6 DISTINCT CLASSES
OF SERVICE

Journey 130 roundtrip miles from Williams to the South Rim along a rail line that dates back to 1901. Out your window the terrain changes from high desert to prairie, prairie to pine. It's a view that's ever-changing until you come across a view that changes so dramatically, it could very well change you.



PULLMAN CLASS
ADULTS: \$67
CHILDREN: \$32

PULLMAN CLASS Ride in an original 1923 Harriman-style coach car with seats that flip so families can face each other. A service attendant shares the train's history and helps passengers plan a fantastic Grand Canyon stay. Western entertainers are also on board to and from the canyon.



COACH CLASS
ADULTS: \$82
CHILDREN: \$51

COACH CLASS Streamliner-era coaches will get you to the canyon and back with style and grace. Enjoy comfortable bench-style seating in these classic air-conditioned 1950s cars with large windows. Plus, you can get up and walk the train back to our classic Café Car, which has snacks and drinks for purchase.



FIRST CLASS
ADULTS: \$159
CHILDREN: \$121

FIRST CLASS Ride in First Class style, boasting oversized, reclining seats with plenty of leg room and grand windows that enhance the scenic journey. Comfort abounds as fresh fruit, pastries, coffee, and juice are provided during the morning. Snacks and soft drinks are complimentary on the return trip, with bar service available.



OBSERVATION DOME
ADULTS: \$189
CHILDREN: \$153

OBSERVATION DOME Experience panoramic views of the surrounding scenery, thanks to a vintage glass-enclosed streamliner car. Fresh fruit, pastries, coffee, and juice are provided during the morning, while snacks are complimentary on the return trip, along with a sparkling wine toast. Bar service available.



LUXURY PARLOR
ADULTS: \$226
CHILDREN: NA

LUXURY PARLOR Enjoy lounge-style comforts including a private bar and access to the rear platform. Plush seating, plenty of leg room, and large picture windows showcase the journey. Fresh fruit, pastries, coffee, and juice are provided during the morning, with snacks complimentary on the return trip, along with a sparkling wine toast.



LUXURY DOME
ADULTS: \$226
CHILDREN: NA

LUXURY DOME Take in the scenery from the extra-large windows of our upper-level Observation Dome, or enjoy refreshments in the lower-level elegantly appointed lounge, featuring a bar, entertainment center, and plush furniture. Access to the rear Luxury Parlor Observation Platform is included. Fresh fruit, pastries, coffee, and juice are provided during the morning, with snacks available on the return trip, along with a sparkling wine toast.

HOTEL PACKAGES

The Railway makes it easy and convenient to plan an itinerary that includes train travel, accommodations and more. One-, two- and three-night packages are available.

CANYON DISCOVERY 3-DAYS & 2-NIGHTS



- Round-trip train travel from Williams to the South Rim • Guide-narrated Motorcoach Tour of the South Rim • Two nights at the Grand Canyon Railway Hotel in Williams • Two breakfasts and two dinners at the Fred Harvey Restaurant in Williams

OR CONSIDER

CANYON DISCOVERY PLUS 4-DAYS & 3-NIGHTS

Make your visit to Grand Canyon even more memorable by adding an overnight stay inside the National Park! This package includes everything in the Canyon Discovery PLUS an additional night at Maswik Lodge North, a modern facility located just a short walk from the Rim.

FROM \$721-\$921+ PER COUPLE*

SAVE 10% YEAR-ROUND WITH THIS PACKAGE!*

For More Details and to Make Reservations:
CALL: 1-800-THE-TRAIN | CLICK: THETRAIN.COM

*Package rates are based on adult double occupancy in a Standard Room, Coach Class train travel, do not include tax or National Park entry fee, and are subject to change.

ALL ABOARD TO THE GRAND CANYON

Since 1901, Grand Canyon Railway has enchanted millions of people from all over the world, taking them on a journey into the heart of one of the Seven Natural Wonders of the World - Grand Canyon National Park.

Make your trip to Grand Canyon even more memorable by traveling aboard a vintage train along a century-old rail line. With six classes of restored passenger service, Grand Canyon Railway is more than a mode of transportation... it's a trip back in time!

FOR RESERVATIONS
1-800-THE-TRAIN
1-800-843-8724
THETRAIN.COM

Williams, AZ is easily accessible from Interstate highways. Take I-40 to Exit 163. Follow Grand Canyon Blvd. 1/2 mile south to Grand Canyon Railway.



TRAIN SCHEDULE

DEPARTING DAILY FROM WILLIAMS, AZ
TRANSPORTING YOU TO THE
SOUTH RIM

ALL ABOARD TO THE GRAND CANYON

9:00 AM	Wild West Show
9:15 AM	Boarding Begins
9:30 AM*	Depart Williams
11:45 AM	Arrive Grand Canyon
11:45 AM - 3:15 PM	Layover / Time at Canyon Option to Add a Rim Tour
3:15 PM	Boarding Begins
3:30 PM	Depart Grand Canyon
5:45 PM	Arrive Williams

*Departure time is 8:30 MST during the months of November and December.

Times are Mountain Standard. Please note Arizona does not observe daylight saving time.
Train boards 15 minutes before departure. During peak periods, a second departure may be scheduled.

MUST-SEE SIGHTS AT THE RIM

IF YOU HAVEN'T EXPLORED THIS HISTORIC VILLAGE, YOU HAVEN'T
EXPERIENCED THE GRAND CANYON



1



EL TOVAR

Opened in 1905, El Tovar is one of America's great historic hotels and is famous for luxury accommodations, fine dining, shopping and spectacular views from just about every window.

2



HOPI HOUSE

The Hopi House, a National Historic Landmark on the canyon rim, opened its doors in 1905. Today the building is a unique gift shop offering authentic Native American art and jewelry.

3



VERKAMP'S VISITOR CENTER

Verkamp's opened in 1906 as a curio and souvenir shop. It is currently a pioneer history museum and Grand Canyon Conservancy store.

4



BRIGHT ANGEL LODGE

Mary Colter designed, the Bright Angel Lodge opened in 1935. Natural, rustic charm on the canyon rim where visitors find both comfort and convenience. Visit the Fred Harvey History Room to see exhibits of the early days of the company.

5



BUCKEY O'NEILL CABIN

The oldest continuously standing structure at the South Rim. It is part of the Bright Angel Lodge and now a two-room suite.

6



LOOKOUT STUDIO

Blending with its environment, Lookout Studio's multi-level porches give visitors breathtaking views right on the canyon's edge. The Lookout Studio was designed by Mary Colter and opened in 1914.

7



KOLB STUDIO

Brothers Kolb built their home and studio teetering on the rim in 1904. It now offers art exhibits, a bookstore, Native American artifacts and an auditorium.

8

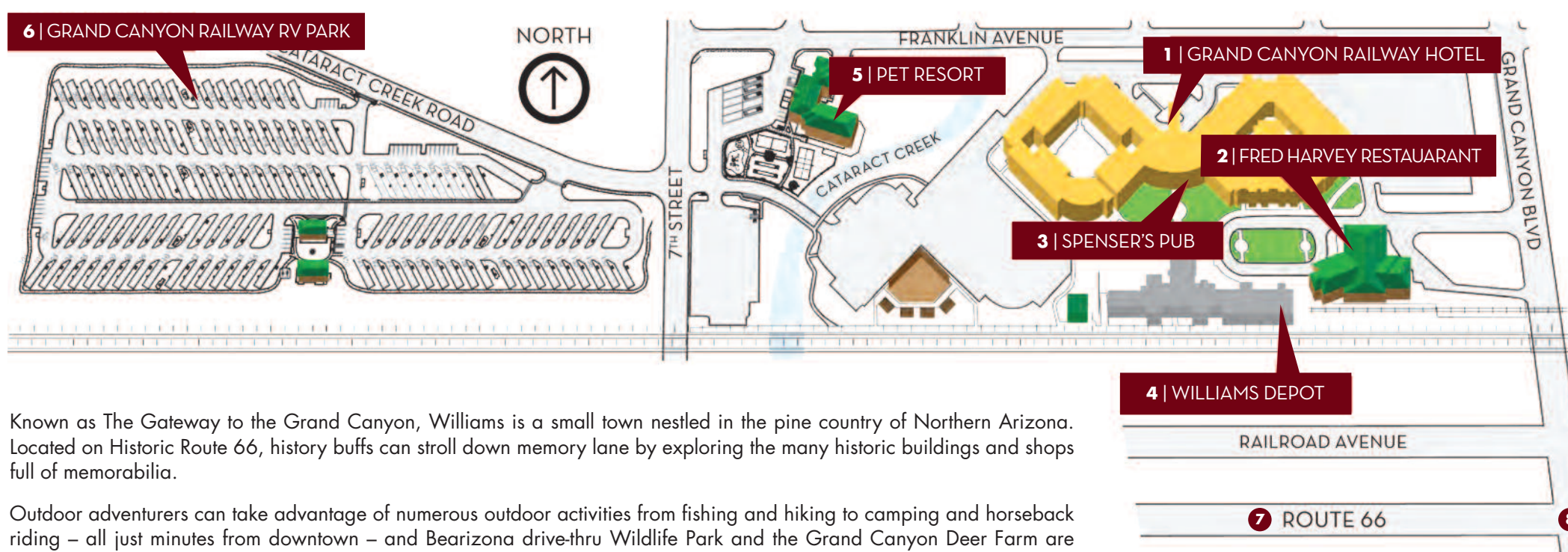


GRAND CANYON RAILWAY TRAIN DEPOT

The Train Depot, built in 1910 is a showplace of early tourism with historic photographs of the South Rim displayed throughout on its timber walls.

EXPLORE WILLIAMS ARIZONA

THE GATEWAY TO THE GRAND CANYON SOUTH RIM



Known as The Gateway to the Grand Canyon, Williams is a small town nestled in the pine country of Northern Arizona. Located on Historic Route 66, history buffs can stroll down memory lane by exploring the many historic buildings and shops full of memorabilia.

Outdoor adventurers can take advantage of numerous outdoor activities from fishing and hiking to camping and horseback riding – all just minutes from downtown – and Bearizona drive-thru Wildlife Park and the Grand Canyon Deer Farm are among the many attractions found in Williams, AZ.

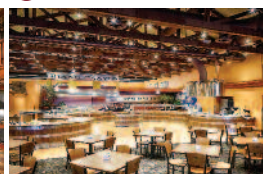
1



GRAND CANYON RAILWAY

Experience the luxury of a bygone era at The Grand Canyon Railway Hotel. Designed to resemble the century-old train depot that housed the original Fray Marcos Hotel, our hotel offers comfortable lodging in a picturesque western setting.

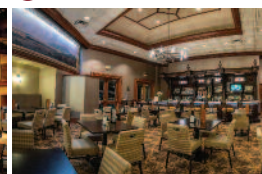
2



FRED HARVEY RESTAURANT

The Fred Harvey Restaurant is conveniently located across from the hotel and adjacent to the depot. Serving breakfast, lunch and dinner, the buffet-style restaurant features a fresh selection of traditional fare, as well as an evening carving station and pasta bar.

3



SPENSER'S PUB

The signature, handcrafted bar in Spenser's Pub dates back to 1887. Located in the Grand Canyon Railway Hotel, Spenser's is the perfect place to relax and enjoy a wide selection of pub-style food and hand-crafted cocktails.

4



WILLIAMS DEPOT

Williams Depot is the southern terminus for the Grand Canyon Railway, located in the original Fray Marcos hotel, which closed in 1954. The original building remains and is the oldest poured-concrete structure in the state of Arizona and is listed on the register of Arizona State Historic Properties.

5



PET RESORT

Our pet resort offers spacious pet suites, an outdoor grass play yard and a caring staff. Contact us for more information about our safe, comfortable, secure and modern facility. For pet safety, current shot records are required prior to boarding.

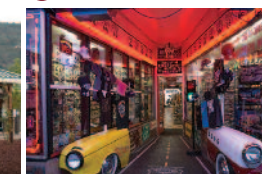
6



GCR RV PARK

Our RV Park has everything you need for your home-away-from-home, including full hook-ups, showers and laundry facilities. We are located adjacent to the historic train depot and just a short walk to Route 66 and historic downtown.

7



ROUTE 66

Although much of the original "Mother Road," was replaced by I-40, Williams, Arizona is home to one of the last remaining preserved stretches of the iconic Route 66, and still maintains the nostalgia of the historic highway.

8



DOWNTOWN WILLIAMS

In charming downtown Williams, you will find old-fashioned soda fountains, Route 66 memorabilia and gift shops, classic cars, special Route 66 themed annual events, and Route 66 themed cafes. Many of the buildings which stand today date back to the 1920's.

WILD WEST SHOW 9:00 AM



BOARDING BEGINS 9:15 AM



ADD A GUIDED MOTORCOACH TOUR



Visit
THETRAIN.COM
for details and prices

While at the canyon, go where cars can't — to scenic overlooks reserved for the "Freedom Tour." The tour lasts approximately 1.5 hours, ventures to amazing vantage points, and is narrated by a knowledgeable guide. The tour works around the train schedule to maximize your time at the South Rim.

SPEND THE NIGHT AT THE CANYON



MASWIK LODGE NORTH STANDARD ROOM

Include a night inside Grand Canyon National Park — see a sunset, a sunrise, or both. Grand Canyon Railway offers packages that include a night at Maswik Lodge, just a short stroll from the rim and the historic district. Rooms include two queen beds, air conditioning, cable TV, and Keurig coffee makers.

MORE TO EXPLORE NEARBY

- INNER-CANYON MOTORCOACH TOURS*
- MAVERICK HELICOPTER TOURS*
- BEARIZONA DRIVE-THROUGH WILDLIFE PARK
- HISTORIC ROUTE 66
- GRAND CANYON DEER FARM
- PLANES OF FAME AIR MUSEUM
- SYCAMORE CANYON
- ROUTE 66 ZIPLINE
- KAIBAB PETROGLYPHS

*Call your Central Reservations Agent and ask for details.

